

**B r i t i s h  
c o l o u r s  
& t e x t i l e s**

spring - summer 2014



# **B r i t i s h c o l o u r s & t e x t i l e s**

spring - summer 2014

This spring/summer season looks ahead with curiosity and energy: fabric collections from British Mills present innovative collections – sparkling with freedom – designed to build attractive fashion. The British weavers use predominantly natural fibres to develop resolutely modern and tactile fabrics which link technology and elegance, sensuality and performance, tradition and provenance.

Becoming ever more influential is sourcing textiles with honest traceability and manufacture, attributes and credentials that come as standard from British Mills.

Expect to see beautiful natural fabrics with a more complex set of fibre blends and fabric weights, colours and constructions, new reliefs in semi-plains, a casual feel to impeccable tailoring, beloved classics updated, eye-catching summer tweeds, tiny checks and lots of stripes with renewed flair.

A perfect season to work with British fabrics.

For further information please contact [textiles@ukft.org](mailto:textiles@ukft.org)

These colours and directions were developed in conjunction with designers working for British Mills

# globe-trotter

Globe-trotter re-introduces craftsmanship into a contemporary vocabulary, updating ethnics and letting go of nostalgic references. A relaxed story with a decorative feel, taking inspiration from overseas travel, international customers and local folkloric crafts. Colour blocking, tie-dye, repeat-less patterns, stripes with texture and summer tweeds are some of the wonderful fabric looks found here.

## COLOURS 1 - 7

Vibrant and electric shades. 1.tango red TP 19-1559 2.lemon TP 14-0848 3.paradise pink TP18-2120 4.metallic copper TP 8560C 5.wine wood TP19-1528 6.fiesta TP17-1461 7.turquoise TP16-5123 ( approximate TP – textile pantone reference)

## FABRICS

openwork; **voiles & organzas & chiffons**; weighty 'scuba-style' fabrics; **raised 3D textures**; space dye or printed yarns; **summer tweeds with raffia**; iridescent effects; **hand-drawn prints not digital**; jungle and garden prints; **embellished embroidery details**; 'handwoven' artisan looks; **repeat-less patterns**; coloured matt metallic highlights; **border designs**; jersey lace; **added value reversible**; fluid silk satins; **fantasy yarns in jackets**; multicolour checks; **pattern mix with a fabric**; off kilter geometrics; **crepons**; futuristic digital prints; **coloured paisley**; applique; **patchwork looks**; plisse; irregular stripes; **'tribal' patterns**; multicoloured mixes; **superimposed patterns on jacquards**.

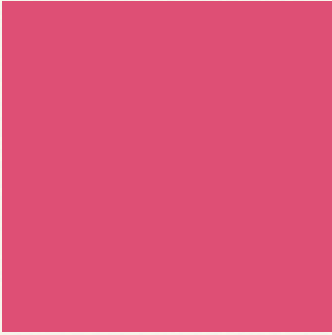
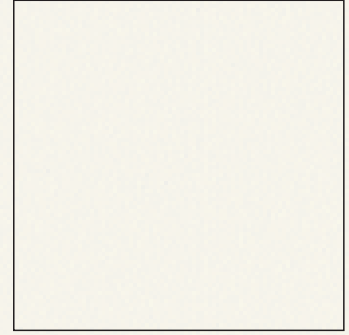
# globe-trotter



1



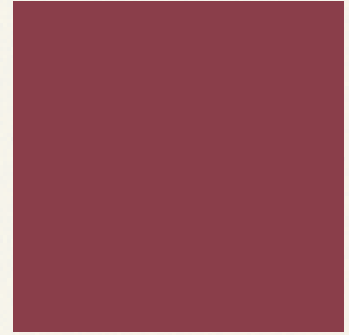
2



3



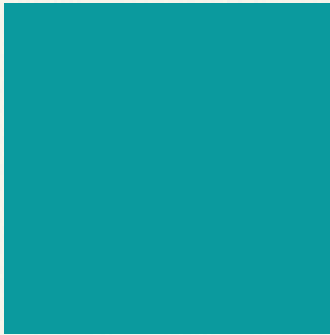
4



5



6



7



british colours & textiles spring - summer 2014

# simply blue

This theme revolves around clean and crisp tailoring, fresh summer stripes and checks, denim inspired chambrays and simple graphic patterns. We look towards seafaring, marine activity, maps and surfaces that remind us of watery textures. Mills accent the fluidity of wool, linen and cotton, lending springiness through over-twist yarns, suppleness via weaves and reducing stiffness through finishing. The resultant fabrics intimately blend nature and technology, mixing natural and synthetic fibres

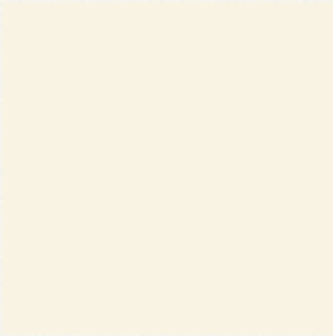
## COLOURS 8 - 16

Fresh and cool. 8. off white TP 11-1001 9.ocean TP17-4247 10. sky blue TP 15-4319 11.navy TP19-4125 12. faded denim TP 15-3932 13.aqua TP 12-5506 14.seaweed TP 19-4215 15. putty grey TP17-0207 16. teal TP 19-5220 (approximate TP – textile pantone reference)

## FABRICS

summer kid mohair suitings; **neat blazer stripes**; bi-stretch; **tiny little checks**; calendered surfaces; **spot or bubble jacquards**; denim derivatives; **pique**; workwear canvas; **oxfords**; cotton gabardines; **chambray**; high twist yarns with a crisp handle; **changeants**; natural stretch; **showerproof wools**; suppleness via weaves; **blurred patterns**; leno weaves; **tone on tone colourings**; casual bespoke looks; **panamas**; tessellated tile patterns; **ikat and ombre effects**; placed dobby motifs; **slim pinstripes**; hounds tooth; **fine twills**; 'worn' finishes; **fine micron wools**; Escorial; **wool/linen blends**; techlana fibre blends; **satin/sateen stripes**.

# simply blue



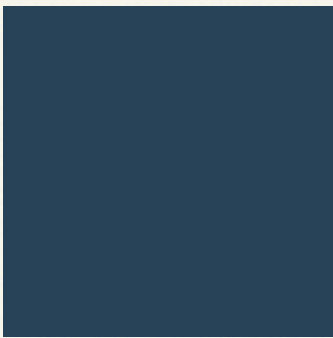
8



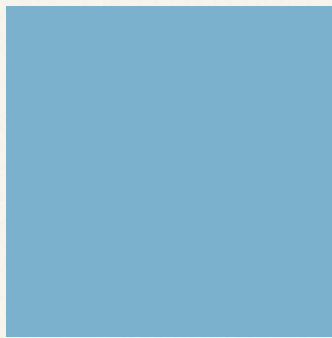
9



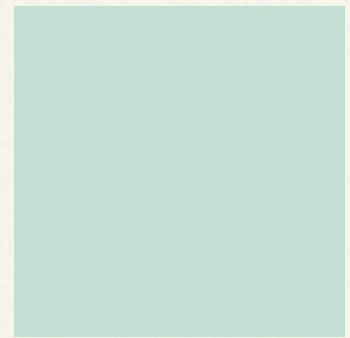
10



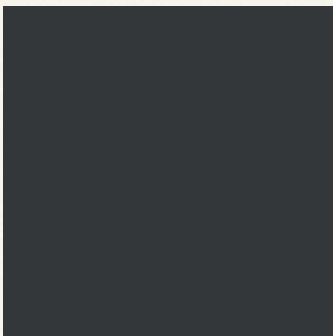
11



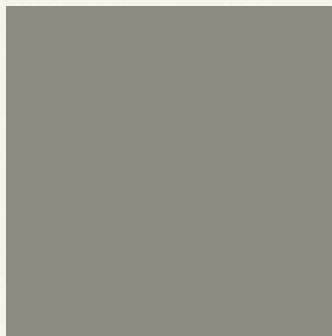
12



13



14



15



16

british colours & textiles spring - summer 2014

# charm chic

Suggesting casual chic, a charming rustic and rural story with the pureness and honesty of the textile process simply interpreted and presented. This look focuses on organic and fibrous yarns, uneven colour, minimal discreet dobbies and delicate lightweight or transparent fabrics. Colourings are pale and low contrast, including blurred patterns and barely visible checks and stripes.

## COLOURS 17 - 24

Understated and casual. 17. slate TP 18-3916 18. optic white 19. bronze TP 17-1143. 20. orchid TP 18-3224 21. sweetpea TP 14-0116 22. gravel TP 13-6106 23. soft rose TP 13-1504 24. raffia TP 13-0815 (approximate TP – textile pantone reference)

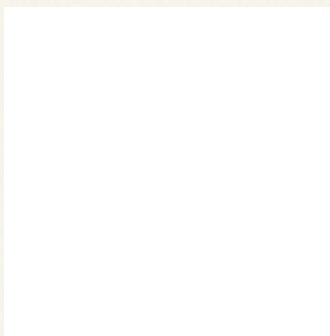
## FABRICS

washable waxed cottons; **basket weave**; matka silks; **narrow linen herringbones**; grainy textures taken from marble or stones; **spaced out motifs**; ultra functional semi-plains; **mixing heavy & light yarns**; silk/cotton crepes; **shiny & matt combinations**; damask; **laundered & wrinkled finishes**; discreet slubs; **blends of natural and artificial**; rustic textures; **uneven colour effects**; washed out colour effects on white warps; **ginghams**; honeycombs; **pattern & texture in stripes**; ottomans; **shantung**; softly coloured glen checks; **authentic plain weave grounds**; clear cut finishes; **recycled fibre & yarns**; wool/cotton blends; **undyed fabrics**; 'roughly' spun luxury yarns; **traditional fabric constructions**.

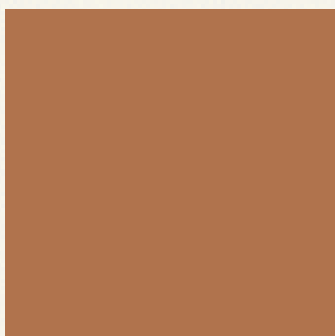
# charm chic



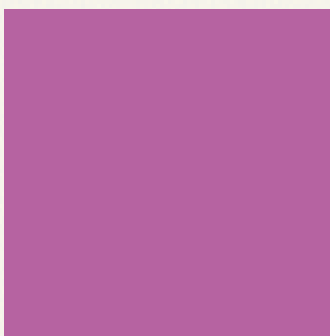
17



18



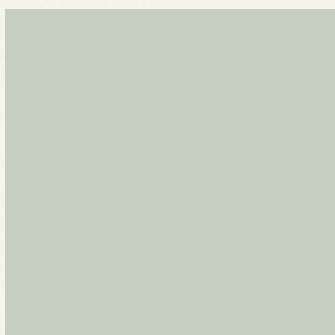
19



20



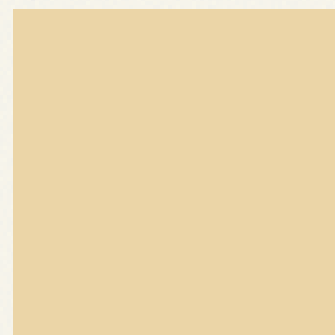
21



22



23

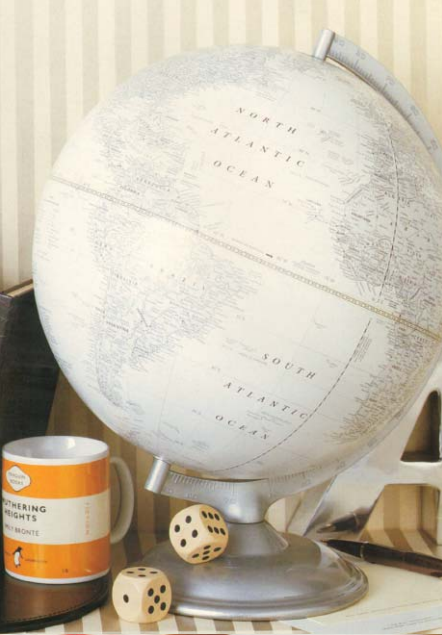


24

british colours & textiles spring - summer 2014

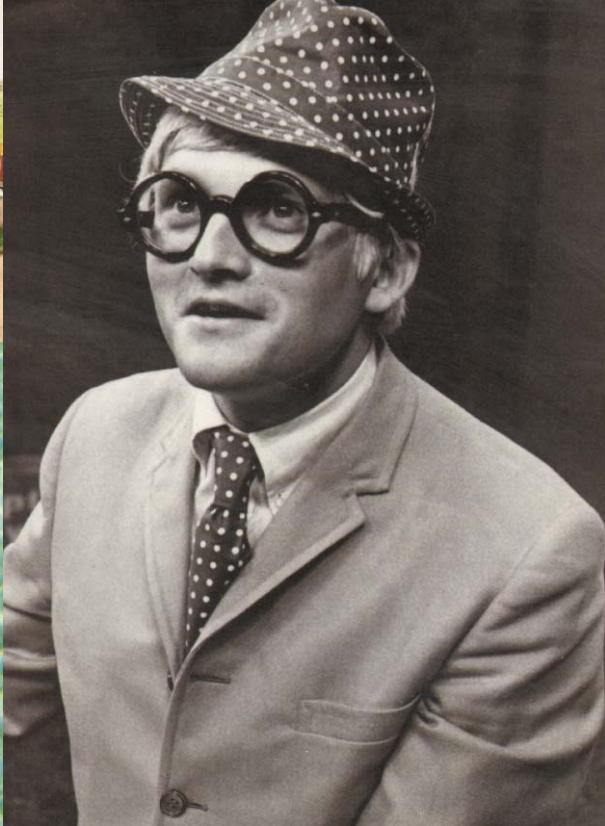
# **globe-trotter**

- artisan + ethnic
- ornamental
- freedom + surprise
- cultural context
- ambiguities
- original styling
- nomad



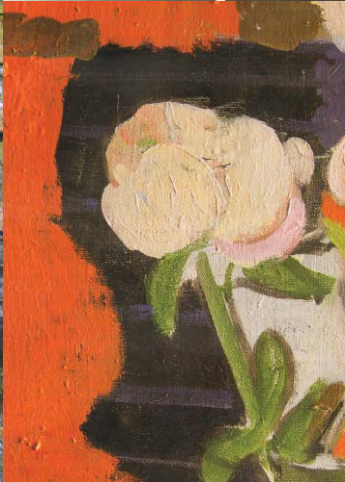
# **simply blue**

- touch of humour
- clean geometrics
- pure & simple
- lightweight
- honed precision
- technology & elegance
- vintage aura



# charm chic

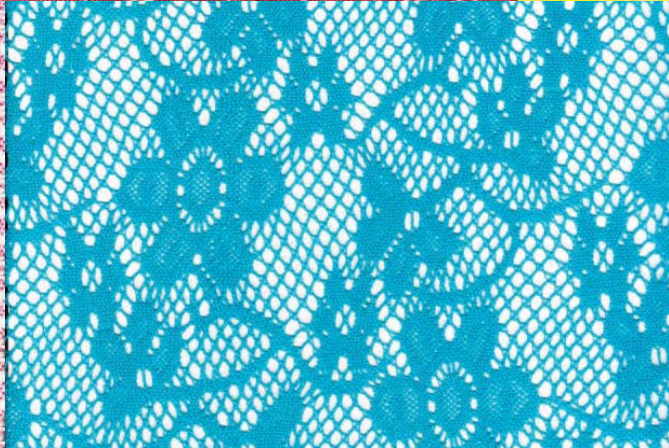
- natural + artificial
- discreet textures
- tender charm
- sensuality & innovation
- rough 'luxury'
- casual style
- admired



# **globe-trotter**

selection of fabrics from the British Mills  
for spring - summer 2014

- **decorative transparency**
- **intricate weaves**
- **spontaneous stripes**
- **3D textures**
- **fluidity**
- **surprising florals**
- **airy constructions**



# **simply blue**

selection of fabrics from the British Mills  
for spring - summer 2014

- **bespoke chambray**
- **sharp stripes + grids**
- **airy lightweights**
- **performance features**
- **neat geometrics**
- **cool wool/mohair**
- **fine crepes**



# charm chic

selection of fabrics from the British Mills  
for spring - summer 2014

- raw & fibrous
- hybrid textiles
- matt & shine
- leno weaves
- whitened colour
- grainy textures
- ambiguous handles



supported by

UK  
TRADE &  
INVESTMENT



ukft<sup>®</sup>  
ukft.org