

**B r i t i s h
c o l o u r s
& t e x t i l e s**

spring - summer 2015

B r i t i s h c o l o u r s & t e x t i l e s

spring - summer 2015

The season is brimming full of new combinations and co-ordinates where textures and handles provide the defining characteristics.

British mills open up new partnerships in touch with nature and manufacturing which offer an exchange of techniques and tactile surprises, all perfect ingredients for the fashion and tailoring world.

British textiles are open to spontaneity yet without excess, emotions are fortified, lightness is invited in, strictness is beside the point and refinement is essential.

We see and appreciate the value of UK fabric manufacturing and acknowledge some astonishingly creative, shared and unexpected collaborations. British mills and their customers enjoy a timely and successful season.

These colours and directions were developed in conjunction with designers working for British textile companies

relaxed craft

We are in the mood for a laid-back approach to fabrics, there's a new feeling of relaxed and easy glamour that trades formality for individuality – how liberating! This theme focuses on the 'raw' and overtly textural; dry effects that have interrupted surfaces - broken, grainy and flecked, melange, granular, mouliné and printed marled looks. Inspired by craftwork and marks or textures made by materials, by accidental unions and chanced-upon amalgamation, the knowledge from craft is conjoined with technology, whilst an extra element of recycling and reconstituting is added to the mix. There is an engaging sense of tenderness and lightness to this story.

COLOURS 1 - 7

Easy wear muted hues. 1.pastel blue TP 15-393 2.smoky mauve TP 17-3808 3.cream TP 12-0709 4.pale khaki TP 16-0205 5.straw TP 12-0718 6.leaf green TP 15-0531 7.russet 16-1342 8.coral TP 16-1624 9.winewood TP 18-1619

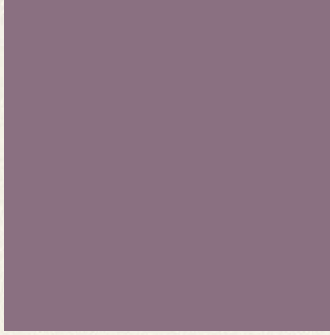
FABRICS

Hopsack; soft coloured chambray; **micro checks**; gauze, **chiffons**, voiles and other semi-transparent and floaty fabrics; **melange yarns**; papery and dry handles; **devoré and other washed-out and faded effects**; 'drawn-thread' work; **delicate seersuckers**; slubby or grainy grounds; **speckled or blurred surface textures**; open leno weaves; **sportswear inspired weaves or prints**; cotton fleece jersey; **irregular fabric finishes**; ombré shading effects; **checks in sepia colourings**; cool wool ; **supple and fluid twills**; 'hand-woven' appearance for dobbies and jacquard.

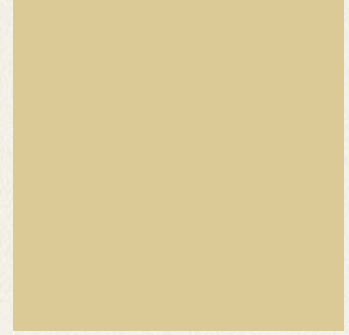
relaxed craft



1



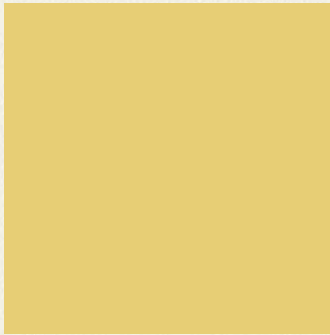
2



3



4



5



6



7



8



9

british colours & textiles spring - summer 2015

open house

A veritable 'United Nations' of textures and nomadic finds exude a global charisma, from sartorial city suiting with a nod towards alluring colonial origins of the international traveller that effortlessly exploits patterns and surfaces, and moves between cutting edge techniques and reflection on historical ornaments and elements. A curious collection of classic tones that elegantly incorporate avant-garde shades with distinct personality. We yearn for design, product, experience that seize us, rooted in the ideology of expressing and receiving pure emotion, we create common shared ties with our communities, our work and most importantly with ourselves.

COLOURS 8 - 16

Dark and vibrant shades. 10.olive TP 17-0330 11.mid denim 17-4027 12.dusty navy TP 19-3929 13.tobacco TP 18-1015 14.claret TP 19-1726 15.brick TP 18-1239 16.cool yellow TP 15-0732 17.pale grey 16-3803 18.charcoal TP 19-0201

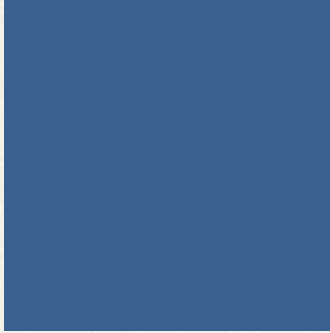
FABRICS

Changeant; **smooth crepes**; ottoman; **panamas**; neat and small herringbones; **very airy and minimal check patterns**; lustrous silk suitings; **canvas weaves**; laundered or 'crumpled' finishes; **crisp cotton sateens**; subtle and spaced-out pinstripes; **window pane checks**; one and one colouring; **wool/linen**; safari type fabrics; **decorative effects in textures or structures**; calligraphy and scribbles as pattern; **tonal Glen checks**; gabardines; **soft velvets and corduroys**; cool mohair suitings; **mat pleated textiles**; diffused colouring for Prince of Wales.

open house



10



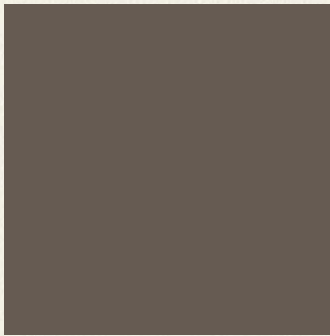
11



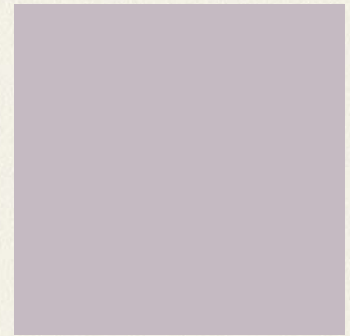
12



13



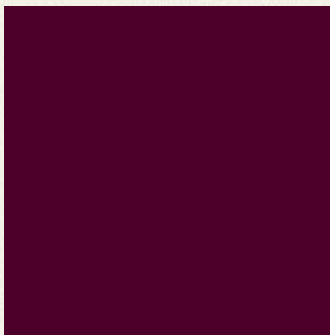
14



15



16



17



18

british colours & textiles spring - summer 2015

art lab

Artistic freedom is influenced in many ways by today's complex and multi-faceted lives, which call for today's textiles and fashion wardrobe to be as varied as our working day and (sometimes) as impulsive as our mood: our advice this season is to 'go for it!'. There's a wonderful juxtapositioning of colour this season which is bold and painterly, as we start to put value on art as we do on music, literature and fashion; the spontaneity and ever changing expression of art assists us with the fabric development and occasionally pushes the boundaries of conventional construction – thready, frothy, shimmery, contrast weights for example all fully explore textile creativity, construction, finish and contrast. Beautiful refined natural fabrics are important here too.

COLOURS 17 - 24

Vibrant, energetic and fresh tones. 19. fuchsia pink TP 18-2120 20. orange TP 17-1449 21. lemon TP 13-0759 22. putty TP 15-3800 23. white TP 11-0104 24. jade TP 17-5117 25. rich turquoise TP 18-4434

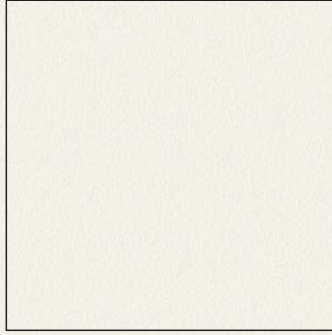
FABRICS

Honeycomb; **fantasy and experimental summer tweeds**; voluminous or puckered effects such as matelassé and cloque; **madras style for jacketing checks**; net, mesh and re-worked lace looks; **shells, coral and other aquatic pattern inspiration**; tonal colour blocking patterns; **brush stroke and painterly effects**; playful stripes often with innovative structural techniques; **mixing a variety of different weaves in the same fabric for added texture and tactility**; printed yarn; **big painterly summer florals**; embossing; **rounded geometrics**; waxy or gummy coatings; **plump yet supple cable yarns for thick and thin patterns**; summer quiltings; **silk Donegal's**; lively blazer stripes; **floating or cut yarns**; extra weft figuring

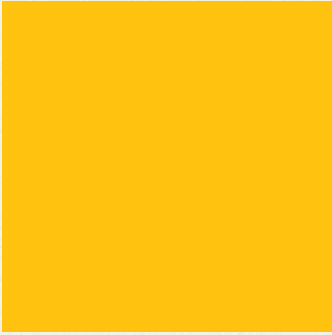
art lab



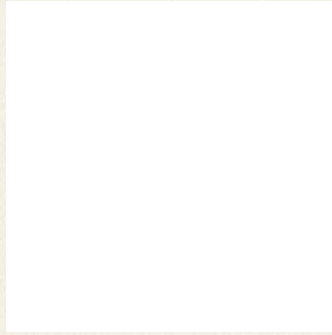
19



20



21



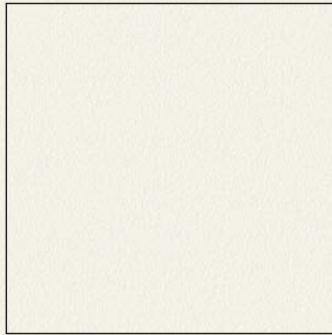
22



23



24



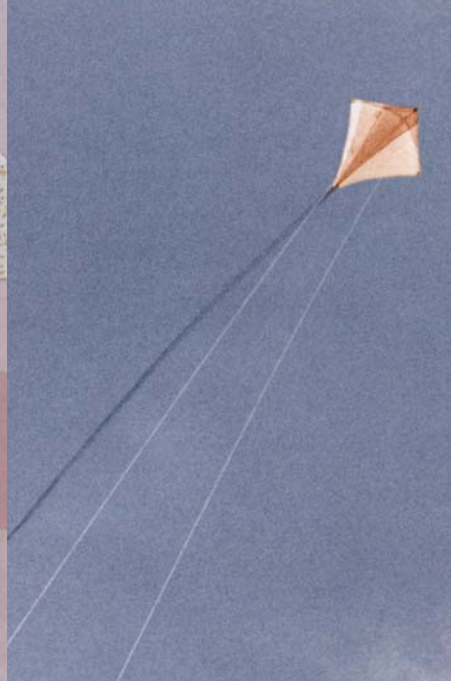
25



british colours & textiles spring - summer 2015

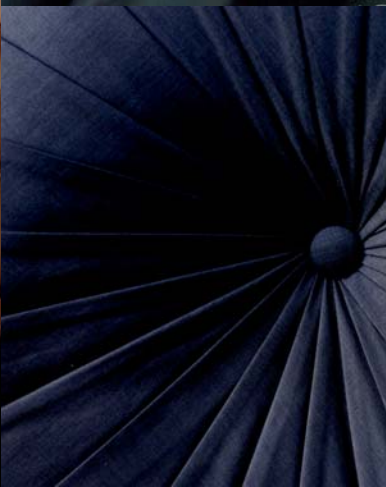
relaxed craft

- **filtered colour**
- **layering**
- **craftmanship**
- **rustic and raw**
- **blurred effects**
- **floaty**
- **poetic**



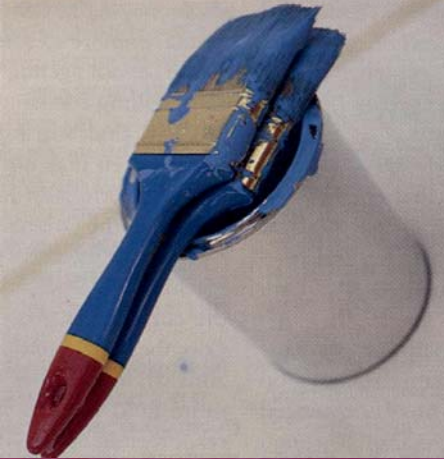
open house

- **authentic**
- **exploration**
- **communal**
- **re-purposing**
- **slightly ethnic**
- **emotional connections**
- sensitive**

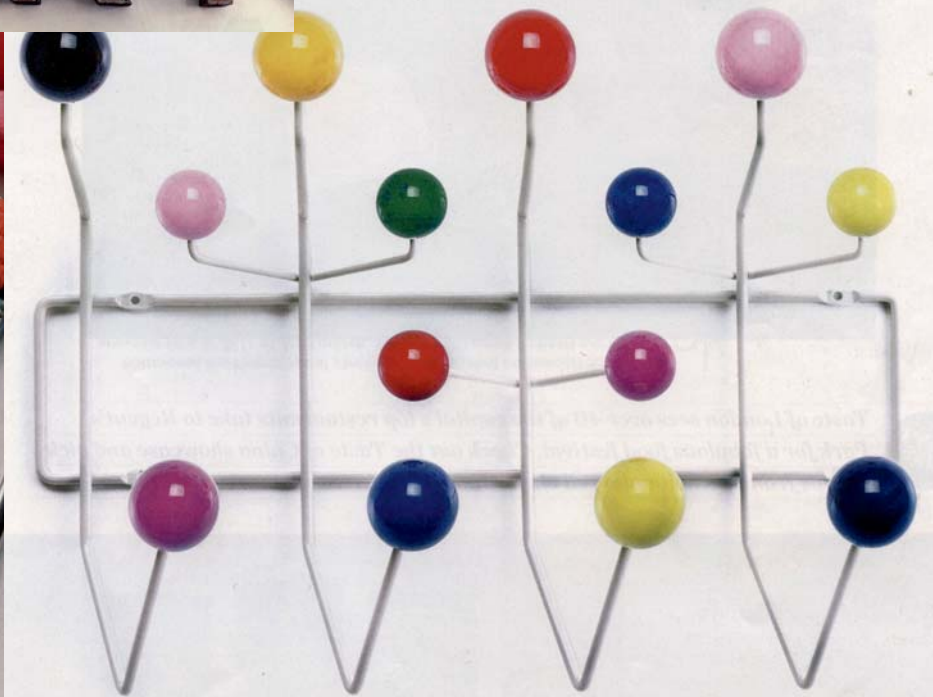


art lab

- **simplicity & complexity**
- **abstract**
- **absurdity inspires**
- **experimental**
- **colour blocking**
- **provocation**
- **energy**



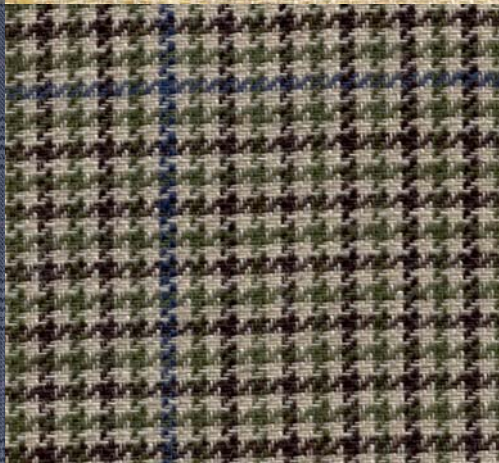
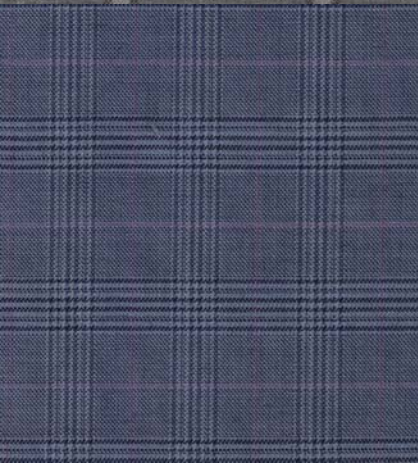
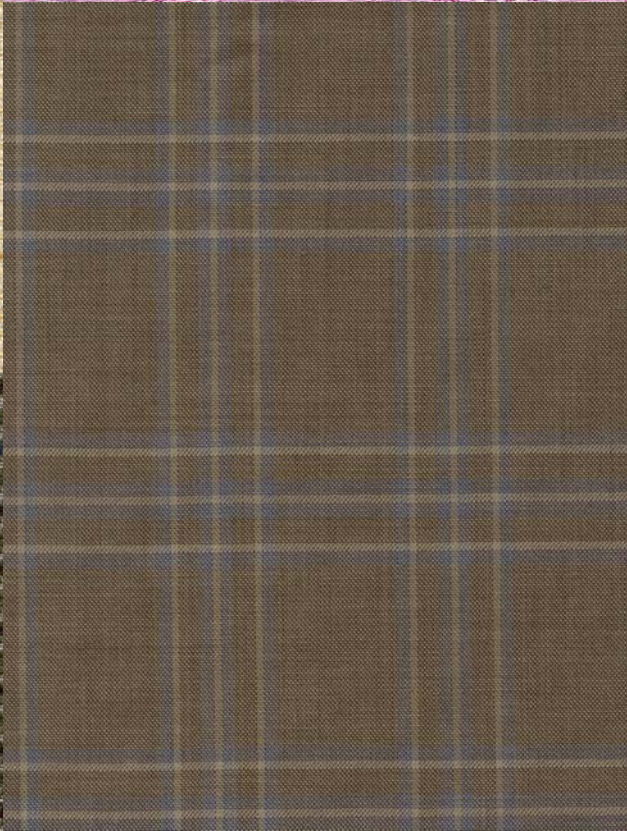
ART



relaxed craft

selection of fabrics from the British Mills
for spring - summer 2015

- **textural emphasis**
- **irregular finishes**
- **lightweight & floaty**
- **melange colourings**
- **wool/linen blends**
- **iridescent**
- **delicate openwork**



open house

selection of fabrics from the British Mills
for spring - summer 2015

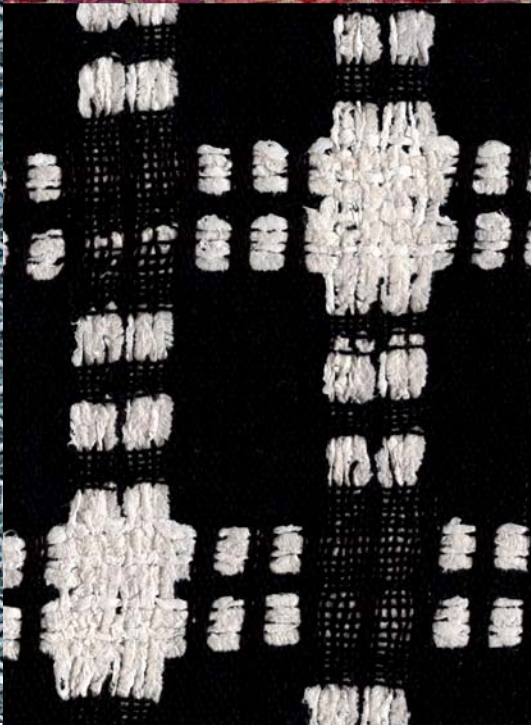
- **ultrafine**
- **airy checks**
- **fluidity & drape**
- **discreet pinstripes**
- **performance finishes**
- **wool/silk blends**
- **micro ground weaves**



art lab

selection of fabrics from the British Mills
for spring - summer 2015

- **soft volumes**
- **arty summer tweeds**
- **painterly jacquards**
- **3D weaves**
- **piques**
- **rounded geometrics**
- **colourful checks**





UK Trade
& Investment

ukft[®]
ukft.org